



A Jungian Perspective on Nature & Psyche

Jeffrey T. Kiehl, Ph.D.

Outline

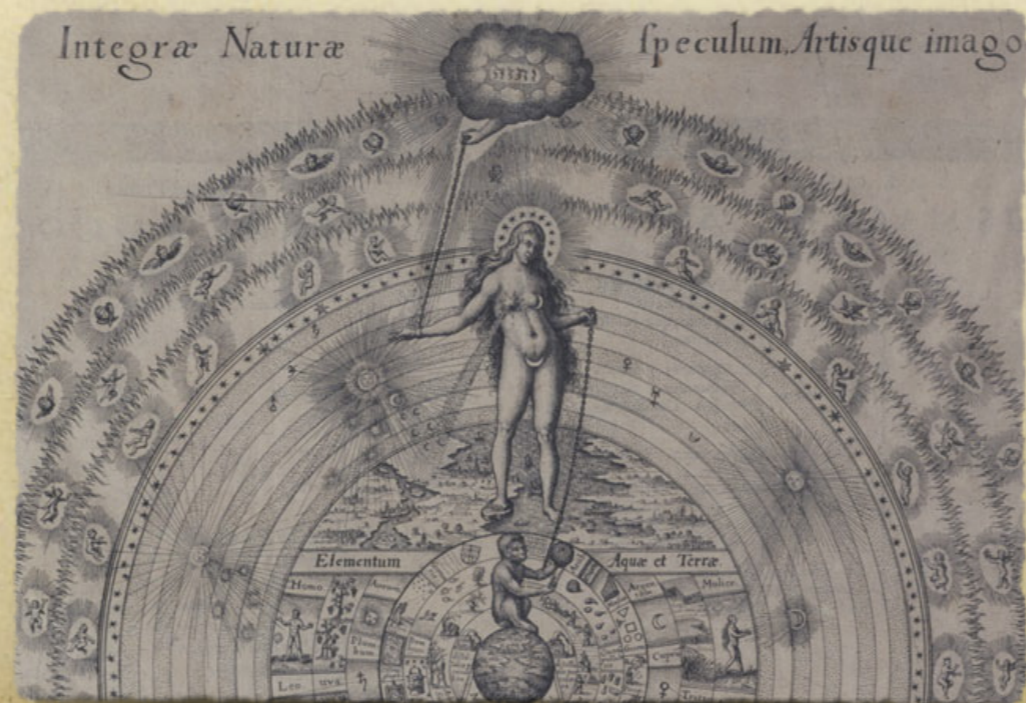
- Why now?
- What does a Jungian perspective offer?
- How to connect people to the problem?
- Where to from here?

Why Now?

- Earth faces a unique global crisis
- A warming not seen since deep time
- Rate of warming is unprecedented
- A change never experienced by the human species

What Does a Jungian Perspective Offer?

- Working with the invisible other
- Mediation of opposites via the transcendent function
- Reality of the *anima mundi* & *unus munus*



"Hemmed round by rationalistic walls, we are cut off from the eternity of nature. Analytical psychology seeks to break through these walls by digging up again the fantasy-images of the unconscious ..."

C.G. Jung (CW 8, par. 739)

Nature's Invisibility

- Out of Sight, Out of Mind (Space)
- Inability to Look Ahead (Time)
- Priority of Values (Relating)
- Physical Disconnection (Body)



Thinking



Sensing



Intuiting

Valuing

Lack of
Knowledge



Lack of
Contact



Lack of
Foresight

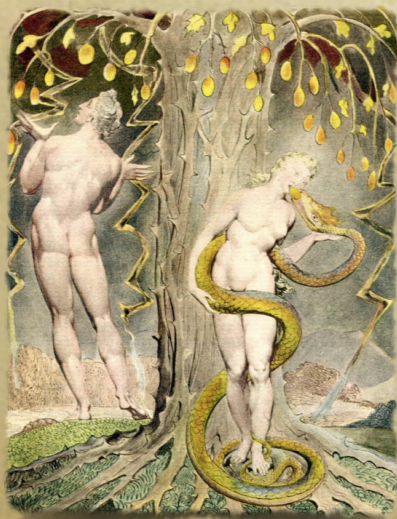


Lack of
Values



How to Connect People to the Problem?

- Need more than a cognitive approach
- The power of affect & image
- The role of metaphors & narratives
- Ultimately a discovery of new symbols



Where to From Here?

"Our effort today should be the double one of consciousness plus a full participation in life."

C.G.Jung (AP, p. 68)

- Need appropriate bridges among communities
- Engagement of the Jungian community
- Proposed workshop at Esalen

"Sustaining Earth, Sustaining Soul"



